

LAPWAI SCHOOL DISTRICT #341

2024-2025

AUGUST 7, 2023

SCHOOL REGISTRATION

August 14th & 15th
9:00a.m. - 6:00p.m.



- 07/31 ADMINISTRATORS RETURNED
- 08/07 FRONT OFFICE SECRETARIES RETURNED
- 08/14 & 08/15 REGISTRATION
- 08/21 TEACHERS RETURN
- 08/27 FIRST DAY OF SCHOOL
- 09/02 LABOR DAY HOLIDAY

SCHOOL CALENDARS CAN BE FOUND AT WWW.LAPWAI.ORG

For families new to our district, including kindergarten students, registration will be done in person. You can come into your child's school to get your Parent Access ID and Password. Staff will be onsite to help register your student(s). Parents with incoming kindergarten and new students are required to bring the students birth certificate, up to date immunizations, and proof of residency. This is mandatory to enroll your student.

If your student is a returning student and you already have a PowerSchool profile you can register from home or in person. There are additional immunization requirements: 7th & 12th grade parents please bring a copy of your students updated immunizations to registration. 7th graders require to have the tdap booster and 12th grade students are required to have the meningococcal.

Notice: New Address Change

Please note the City of Lapwai has changed the District Office address. Our previous address was 404 South Main Street and now is 230 Main Street, Lapwai Idaho. The Elementary is now 230 Agency Road, Lapwai Idaho and the Middle/High is 500 Willow Ave, Lapwai Idaho. Any families in the City of Lapwai that are assigned a new address please keep the letter that is mailed to you with your new address on it. Take a picture or bring it with you to school registration to update your students physical address.

Picture Day

Elementary Picture day is Friday September 27th and retakes are October 25th.

Middle/High School picture day is September 5th & retakes October 4th.



School Hours

Elementary School Library opens at 7:30 am for early arrivals and cafeteria doors open at 7:50 a.m., Monday through Friday. Class starts at 8:20 a.m. and students are released at 3:15 p.m. Friday class starts at 8:20 a.m. and early release time is 1:05 p.m.

At the Middle/High School, Monday - Thursday the first bell is at 8:07a.m. and tardy bell is at 8:10a.m. and students are released at 3:04 p.m. Friday tardy bell is at 8:07am class starts at 8:10 a.m. and early release time is at 12:59 p.m.

Reminder, every Friday is an early release.

Safety Update



Our highest priority is always the safety of our students. In addition to clear and practiced procedures in the event of an emergency, additional resources are now in place. Video intercom systems have been installed in all buildings. Perimeters will remain locked the majority of the school day. Guests are requested to use the intercoms at entrances for school entry. Similar to a door bell, our offices will be alerted of your arrival. We will welcome visitors with the two-way intercom and open the door remotely. We would like to thank our families for their support with these additional safety measures. Questions can be directed to Superintendent Aiken at (208) 843-2622, daiken@Lapwai.org.



Athletic Season Passes

Adults	Regular	Sr. Citizen 62+
Full Year	\$85	\$42
After Fall	\$70	\$35
Sport		
Students	\$25	

Gate Prices (set by the league)

Adults	\$6.00
Sr. Citizen 62+	\$5.00
Students 7-12	\$5.00
Students k-6	\$4.00
Pre-k and under	free

Middle School Gate Price

Adults	\$4.00
Sr. Citizens 62+	\$3.00
Students	\$3.00
Pre-k and under	free

Activity Cards	\$25.00
MS/HS Yearbook	\$55.00
Drivers Education	\$125.00
(in district students)	
Drivers Education	\$150.00

Important Start Dates:

- 08/12 HS Football practice starts
- 08/12 HS Volleyball practice starts
- 08/12 Cheer Practice starts
- 08/26 MS Football starts
- 08/27 Frist day of School
- 10/25 HS Football Homecoming & Senior Night

Schedules can be found at:

<http://www.lapwai.org/athletics/athletics.php>

Athletics and Eligibility

Important information for Wildcat Athletics

-7th, 9th, and 11th graders all need new physicals. No exceptions. Please check on our website under Athletics for physical forms. All student athletes need physical forms on file.

Activity card can be paid in person at registration.

-Mandatory drug testing will take place in August.

-Student athletes will not be allowed to practice without the following:

- Physical
- Drug Test
- Registration forms
- Activity card payment by August 15th.

The Lapwai Athletic Direction Team is here to support our student athletes and loyal Wildcat fans.

Athletic Direction Team Administrators:

D’Lisa Penney, Middle-High Principal & David Aiken, Superintendent

Athletic Direction Team Coordinators:

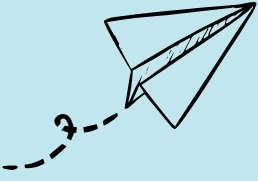
Lori Lynn Picard, High-School Coordinator
Jene Ane Carlin, Middle-School Coordinator

Lapwai School District Athletic Direction Contact Information:

Wildcats@Lapwai.org (208) 843-2241

Thank you for your Wildcat pride and modeling positive sportsmanship for our student athletes!

Welcome



Please help us welcome Ms. Stapley, our new Middle School ELA teacher; Kiri Brown, High School Secretary; Dan Dunham, Transportation Supervisor; and Greg Hansen, Maintenance Supervisor.

Out of District Students Open Enrollment

Acceptance of out-of-district students is a program that spans one school year at a time. Parents/guardians must reapply each year by February 1st for the following school year. Please complete an Open Enrollment application at the Lapwai School District Office prior to registration. We are located in the back of the gymnasium lobby at 230 Main Street in Lapwai.

Out of State

Idaho Code also requires districts to charge tuition for Out-of-state students, please contact the district office for additional information.

School Insurance

Insurance is the responsibility of the parent and is required for students participating in sports.



Student Injuries

Even with the greatest precautions and the closest supervision, accidents can and do happen at school. They are an act of life and part of the growing-up process our children go through. Parents need to be aware of this and be prepared for possible medical expenses that may arise should their child be injured at school. The school district does not provide medical insurance to automatically pay medical expenses when students are injured at school. This is the responsibility of the parents or legal guardians. The district carries legal liability insurance.

Transportation

Bus Routes will remain basically the same. Pickup and drop off times are tentative at this time. Firm times will be established at the beginning of school as student loads dictates. Questions should be directed to Dan Dunham, Transportation Director, at (208) 843-2681.

Lunch Program



Lapwai Schools is fortunate to continue to offer the Provision 2 Breakfast and Lunch Program. It is a FREE breakfast and lunch program for ALL students district wide. Please encourage your child to utilize this program. Adults are welcome for lunch and the cost is \$5.00 per meal. Any adult who wishes to eat, please sign up with the kitchen staff to ensure enough food is available. For more information regarding the program, parents may contact Ann Munstermann, Food Service Supervisor at (208) 843- 2241.

Family Education Rights Privacy Act

Federal regulations are in effect governing student's records. The register published by the United States Dept. of Education. If you desire more information please contact the Superintendent (208)-843-2622.

Staff Qualifications

School districts receiving Title I funds are required to notify parents they may request information regarding the professional qualifications of their child's classroom teacher(s). We are prepared to celebrate our highly qualified staff and share their accomplishments with you on request.

As a parent of a student attending a school receiving federal program funds, you have the right to know:

- Is my child's teacher licensed to teach the grades and subject(s) assigned?
- Is my child's teacher teaching with a provisional license, meaning the state waived requirements for my child's teacher?
- What is the college major of my child's teacher?
- What degree or degrees does my child's teacher hold?

To request the state qualifications for your child's teacher or instructional aide, please contact David Aiken, Superintendent, at (208) 843-2622. If you would like more information about your child's school, please feel free to contact our dedicated principals:

Teri Wagner, Lapwai Elementary School: (208) 843-2960

D'Lisa Penney, Lapwai Middle-High School: (208) 843-2241

McKinney-Vento Act

If your family is living in any of the following living situations:

- In a shelter
- In a motel or campground due to a lack of alternative accommodations
- In a car, park, or abandoned building
- Doubled up with other people due to a loss of housing or economic hardship

Your school-age child may qualify for certain rights and protections under the federal McKinney-Vento Act. Your eligible children have the right to:

- Receive a free, appropriate public education.
- Enroll in school immediately, even if lacking documents normally required for enrollment.
- Enroll in school and attend classes while the school gathers needed documents.
- Enroll in the local school; or continue attending their school of origin (the school they attended when permanently housed or the school in which they were last enrolled), if that is your preference.
- Receive transportation to and from the school of origin, if you request this.
- Receive educational services comparable to those provided to other students, according to your children's needs.

Homeless Education Liaison

Dr. David Aiken
Lapwai District Office
(208) 843-2622 ext. 1
daiken@lapwai.org

Foster Care Liaison

Lori Ravet
Lapwai Elementary or
Middle/High
(208) 843-2960
(208)843-2241
ext. 7777
lravet@lapwai.org



Student Directory Information

At times during the school year legitimate requests are made by agencies such as parent groups or armed forces to obtain lists of student's names and addresses. By law schools need to comply with these requests. However, individuals have the right to withhold the information. If you do not want the school to release your child's name and address, please contact your children's school principal. This must be done annually.

Asbestos

All asbestos-containing materials in buildings owned and/or operated by the Lapwai School District are in good condition and will continue to be managed in place as recommended by the accredited AHERA Management Planner. Each school has its perspective AHERA Management Plans located in their administrative offices.

Everyone is welcome to view this plan during school hours, Monday through Friday 8:00 a.m.- 3:30 p.m. The AHERA Designated person is Greg Hansen and is available to answer questions you may have about our buildings at (208)-790-2734.

Home of the Wildcats



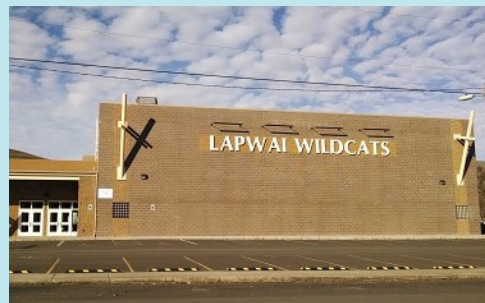
Volunteer Procedures

Lapwai Schools welcome volunteers to assist with instructional activities.

Volunteers should contact the principal at the respective school they would like to assist. Board policy requires approval of all volunteers. Conditional approval may be obtained from the principal or superintendent. Volunteers will be required to undergo a fingerprint and background check through the Idaho Dept. of Education.

School Facilities Agreement

All requests must be made a minimum of one week in advance. The Facilities Use Agreement and fees can be found at www.lapwai.org or at the District Office, located at 230 Main Street, Main. The rental agreement will include proof of insurance.

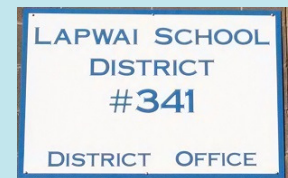


Public Meetings

Regularly scheduled meetings of the Board of Trustees for the Lapwai School District #341 are held on the third Monday of each month at 5:00pm in the District Office. If you would like to address the board on a particular concern, please contact Dr. David Aiken at the district office to be scheduled on the agenda. These meetings are also an opportunity to discuss the Impact Aid and the Indian Policy and procedures

District Office

Hours for the District Office are Monday Thursday 8:00 a.m. - 4:30 p.m. and Fridays 8:00 a.m. - 4:00 p.m. The district office is located at 230 Main Street, Lapwai Idaho. Please enter through the front doors of the Lapwai High School gymnasium.



Please visit our website at www.lapwai.org or our facebook page.

Child Find

The Lapwai School District would like to take this opportunity to notify our community of Child Find activities. We would like to ensure all children receive the services they need. The school district has a special education screening program to identify and screen all children with suspected disabilities who are residents of the district and who have not graduated from high school. Upon request the school district will screen any resident child who has not graduated high school to determine whether a special education referral is appropriate. When school staff reasonably believes a child is a child with a disability, they refer the child for evaluation by a school district Individualized Education Program (IEP) team.

In addition, if you have a child between the ages of 3-5 the Lapwai School District and Nez Perce Tribe Head Start Program will be providing joint developmental screening in September. Each child's motor, communication, and social skills are observed at various play areas. Each child's hearing is checked and information is provided on vision assessments. The information is used to provide the parent with a profile of their child's current development and to provide suggestions for follow-up activities. The information from the screening is also used to determine whether a child should be evaluated for a suspected disability.

A physician, nurse, psychologist, social worker or administrator of a social agency who reasonably believes a child brought to him or her for services is a child with a disability has a legal duty to report the child to the school district in which the child resides. Before referring the child, the person making the referral must inform the child's parent that the referral will be made.

A referral of a child residing in the Lapwai School District may be sent to Lori Ravet, Special Education Director/School Psychologist at 230 Main Street, Lapwai, Idaho 83540, or by email at lravet@lapwai.org, or by phone at 208-843-2960. Any information you provide regarding a child will be confidential as required by local, state, and federal law.

Points of Contact		
<p style="text-align: center;">Lapwai Elementary 288 Agency Rd Lapwai, ID 83540 P: 208-843-2960 F: (208) 843-5289</p> <p style="text-align: center;">Teri Wagner, Principal Tessie McCulley, Secretary Kristen Bateman, Counselor Latasha Dishion, Attendance</p>	<p style="text-align: center;">Lapwai Middle/ High School 500 Willow Ave Lapwai, ID 83540 P: (208) 843-2241 F: (208) 843-5289</p> <p style="text-align: center;">D'Lisa Penney, Principal Kiri Brown, Secretary Josh Nellesen, Counselor Shawna Leighton, Attendance</p>	<p style="text-align: center;">Lapwai District Office 230 Main Street Lapwai, ID 83540 P: (208) 843-2622 F: (208) 843-7746</p> <p style="text-align: center;">Dr. David Aiken, Superintendent Nathan Weeks, Business Manager Connie Desjarlais, Office Manager/AP</p>
<p style="text-align: center;">Special Education Director Lori Ravet Ext. 7777 both schools</p>	<p style="text-align: center;">Transportation Dan Dunham P: (208)-843-2681</p>	<p style="text-align: center;">Maintenance Greg Hansen (208) 790-4734</p>
<p style="text-align: center;">Food Service Directory Ann Munsterman 208-843-2241</p>	<p style="text-align: center;">Indian Education Program Iris Chimburas 208-843-2241</p>	<p style="text-align: center;">Information Technology Erik McKim 208-843-2241</p>

Together, we ensure all students will reach their full potential.