

# Lapwai School District Superintendent's Weekly Update



Friday, October 11, 2024

---



*Celebrations & Pictures of Wildcat Scholars  
& the Dedicated Staff Who Serve Them*

# Thank You for Your Continued Support of Impact Aid

A team from Lapwai joined Superintendent Aiken last week to thank Idaho's Congressmen for their continued support of Impact Aid.

Impact Aid is approximately 31% of the Lapwai School District budget. 12 Idaho districts and over 14,000 Idaho students rely on this critical federal funding. Dr. Aiken also serves as the Idaho State Chair of the National Association of Federally Impacted Schools and represents all of the federally connected students and districts in Idaho.

Impact Aid is the Federal Government's reimbursement to school districts for the presence of nontaxable federal property such as military installations, Indian lands, federal low-rent housing, national laboratories, and grasslands. The presence of nontaxable property limits the ability of school districts to generate sufficient tax revenue to support K-12 education. Nationwide this funding supports 1,200 school districts and 10 million students.

Plummer-Worley
Snake River
Blackfoot
Wilder
Mackay
Mountain Home
Mountain View
Kamiah
Lapwai
Marsing
Bruneau-Grand View
Chief Tahgee Elementary Academy Charter



*Representative Simpson Serves on the House Impact Aid Coalition*



*Eric Morris  
Legislative Correspondent*



*Please Encourage Representative Fulcher to Serve on the House Impact Aid Coalition*



*Molly Fredriksson  
Legislative Assistant*



*Senator Risch Serves on the Senate Impact Aid Coalition*



*Senator Risch*



*Senator Crapo is the Co-Chair of the Senate Impact Aid Coalition*



*Senator Crapo*

*Please join me in celebrating the advocates who joined the Superintendent on behalf of over 14,000 students in 12 Idaho school districts who rely on Impact Aid!*

*Sonya Samuels-Allen, Chair – Lori Johnson, Vice Chair – DelRae Kipp, Trustee – Nathan Weeks, Business Manager*

# Help Us Hold the Federal Government Accountable for Their Obligation to Lapwai Students

*Our Impact Aid allocation is based on the number of children who live on trust property as well as parents who work on trust land.*

*During Parent-Teacher Conferences, November 7<sup>th</sup> and 8<sup>th</sup>, parents will be requested to complete residency and employment surveys to ensure the highest Lapwai School District allocation for Impact Aid. Your confidential responses hold the federal government accountable to their promise of ensuring a fully funded and equitable education for our students.*

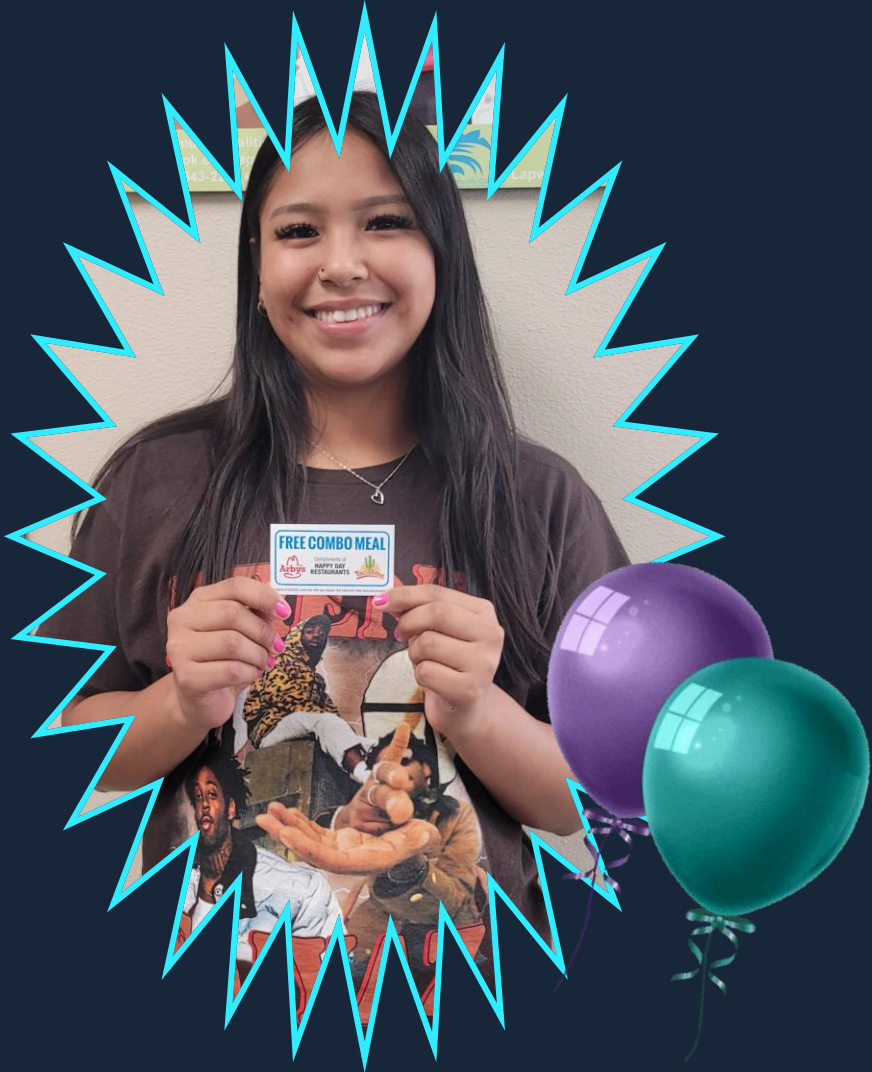
*Impact Aid has not been fully funded since 1969, leaving \$867 million in unmet needs for schools like ours across the country. On average, schools receive about 55% of what they are due. Your help with verification by completing the needed forms will assist us holding them accountable to provide this funding obligation to all Lapwai students.*

*qe'ciyew'yew!*

# Kindergarten

**WEEKLY  
PERFECT  
ATTENDANCE  
ANDREW  
REYNOLDS**





**10<sup>th</sup>  
grade**  
**WEEKLY  
PERFECT  
ATTENDANCE  
LOIS  
OATMAN**

# Spooky Success!



Mrs. Beckman's 3<sup>rd</sup> grade Wildcat Scholars are setting individual success goals followed by a candy exchange for Halloween.

Nez Perce Cultural Principle:  
Teachers Are Guides



# Safe & Supportive Environment

There are growing resources within the Lapwai School District to ensure a safe and supportive learning environment which include:



**David Aiken:** Homeless Education Liaison, Title IX Coordinator, (208) 843-2622

**Kristen Bateman:** Elementary Counselor, School Psychologist, 504 Coordinator, (208) 843-2960

**Jennifer Becker:** Elementary Positive Behavioral Interventions & Supports, (208) 843-2960

**Micah Bisbee:** Restorative Justice Coordinator, (208) 843-2241

**Kiri Brown:** Certified Prevention Specialist, (208) 843-2241

**Iris Chimburas:** Indian Education Coordinator, (208) 843-2241

**Shawna Leighton:** Community Resource Specialist & Truancy Interventionist, (208) 843-2241

**Josh Nellesen:** Middle-High Academic Guidance Counselor, (208) 843-2241

**Lori Lynn Picard:** Home School Liaison, (208) 843-2241

**Lori Ravet:** Special Education Director, School Psychologist, Foster Care Liaison, (208) 843-2960

**Rhonda Taylor:** Indian Education Department Registrar, (208) 843-2241

**Buck Walker:** Middle-High Positive Behavioral Interventions & Supports, (208) 843-2241

**Jennifer Williams:** Guidance Service Specialist, (208) 843-2241

**Jenny Williams:** Cultural Specialist, (208) 843-2241

Ongoing successful collaboration with Nimiipuu Behavioral Health

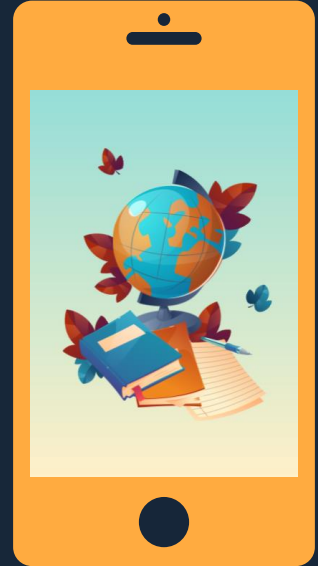


# Lapwai School District PowerSchool Mobile App



Download the PowerSchool Mobile app to keep informed regarding your child's progress at school. You will receive immediate attendance notifications, have access to schedules, and parents with students in grade 6-12 can monitor their student's grades and missing assignments. This new resource provides improved and timely communication with our Wildcat families. The app is free and easy to use.

Use the Lapwai School District Code **B R S B** with the same username and password created during the registration process. Please contact your child's school for assistance.



# CAREER & TECHNICAL EDUCATION CENTER



FALL  
2025

# Mr. Morgan's 8<sup>th</sup> Grade Robotics Class

Lapwai School District YouTube Page

Nez Perce Cultural Principle:  
Teachers Are Guides

Robotics  
Coding  
Engineering  
Perseverance

Nez Perce Cultural Principle:  
Experiential Learning

Lapwai District Schools  
Facebook



2024-2025

# Family Engagement Plan School-Parent-Student Compact

It is the mission of the Lapwai School District to foster relevant family engagement opportunities which accommodate family circumstances, provide choices, validate the family's culture and values, and explicitly emphasize the importance of family support of the student's learning.

Family Engagement Plan input & questions are always welcome! [daiken@Lapwai.org](mailto:daiken@Lapwai.org) (208) 843-2622

[www.Lapwai.org](http://www.Lapwai.org)



[Check Out Our Parent and Family Engagement Policy Here](#)



2024-2025 Family Engagement Plan



*Samara Smith &  
Seaton Powaukee*

2024-2025 School-Parent Compact

***Together, we ensure all students  
will reach their full potential.***



www.Lapwai.org

## Impact Aid



In an effort to hear the voices of our parents, community members and Nez Perce Tribal leaders in the planning and development of our educational programs and activities, the following survey was created. The survey is available in two formats.

[Summary of Last Year's Results](#) 

# Literacy @ Home

Storyline Online

Storyline Online



Oxford Owl

Brightly

Brightly



Free Children's Stories

Parent's Resources



Reading Buddies



National Geographic Kids



Kid Lit TV



Story Time From Space



PBS Kids Reading



Smarty Ants



Time For Kids



Nez Perce Words & Phrases



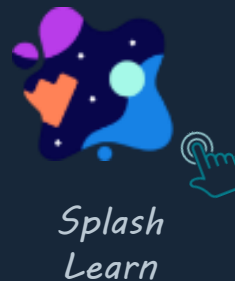
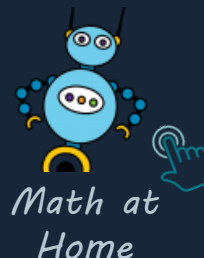
Nez Perce Language Program Website



Nez Perce Language Program Facebook

Check Out the Parent Portal  
Lapwai.org

# Mathematics @ Home



# Parent Resources @ Home



*A Guide for Families  
Helping Your Child  
Succeed in School*



*Digital Awareness  
for Parents*



*Parent & Family  
Digital Learning Guide*



*We R Native  
Youth Resources*



*PBS For Parents*



*Essential for  
Parenting: Teens*

*Check Out the Parent Portal  
Lapwai.org*